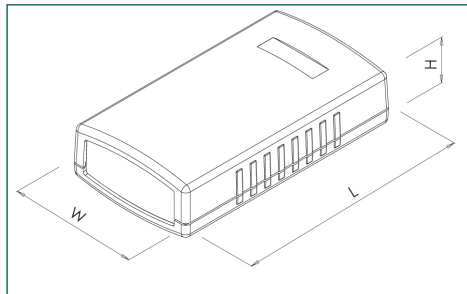
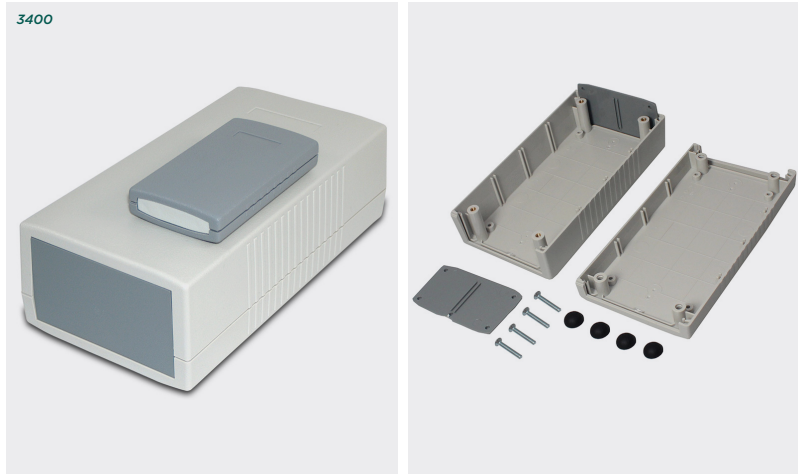


# 3400 series end panel design cases

## Product overview

Versatile range of end-panel four-part construction enclosures, available in four lengths and nine heights.

- Lid, base and end panels moulded in high impact UL94-HB or UL94-V0 ABS
- Integral mounting guides in U-shell lid and base for vertical PCB mounting
- Bosses in base and lid for horizontal PCB mounting
- Ergonomically curved lid and base
- Four part construction for complete access and fitting of electronics
- Four M3 or self-tapping screws countersunk into base and fixed into lid
- Textured non-scratch surface
- 3400 series has been designed to meet the requirements of IP54



SPECIFICATION	
Materials	UL94-V0 or high impact ABS
Protection class	3400 series has been designed to meet the requirements of IP54
Standard colours	UL94-V0- Lid and base dark grey similar to RAL 7040, end panels light grey High impact UL94-HB - Lid and base light grey similar to RAL 9002, end panels dark grey
Fixing styles	Self-tapping- 3400-30 to 3400-34 M3 brass inserts- 3400-36 to 3400-59
Standard unit includes	Base and lid 2x end panels 4x fixing screws 4x rubber feet / screw covers

HIGH IMPACT ABS - UL94-HB	FLAME RETARDANT ABS - UL94-V0	LENGTH	WIDTH	HEIGHT
3400-30	3400-01	90mm	50mm	16mm
3400-31	3400-03	90mm	50mm	24mm
3400-34	3400-04	90mm	50mm	32mm
3400-36	3400-07	120mm	60mm	30mm
3400-38	3400-10	120mm	60mm	40mm
3400-40	3400-12	120mm	60mm	50mm
3400-43	3400-13	150mm	80mm	30mm
3400-45	3400-16	150mm	80mm	45mm
3400-47	3400-18	150mm	80mm	60mm
3400-52	3400-21	190mm	100mm	40mm
3400-54	3400-22	190mm	100mm	60mm
3400-59	3400-25	190mm	100mm	80mm

## KEY FEATURES

Moulded in ABS | Attractive curved design | PCB mounting



PLASTIC ENCLOSURES

